



Infant and Early Mental Health Care Pathways

Leveraging community strengths through Implementation of
IEMH Care Pathways into existing systems



Who Are We?

Co-Investigator:
Dr. Chaya Kulkarni



Who Are We?

Project Coordinator:
Rup Patel



Who Are We?

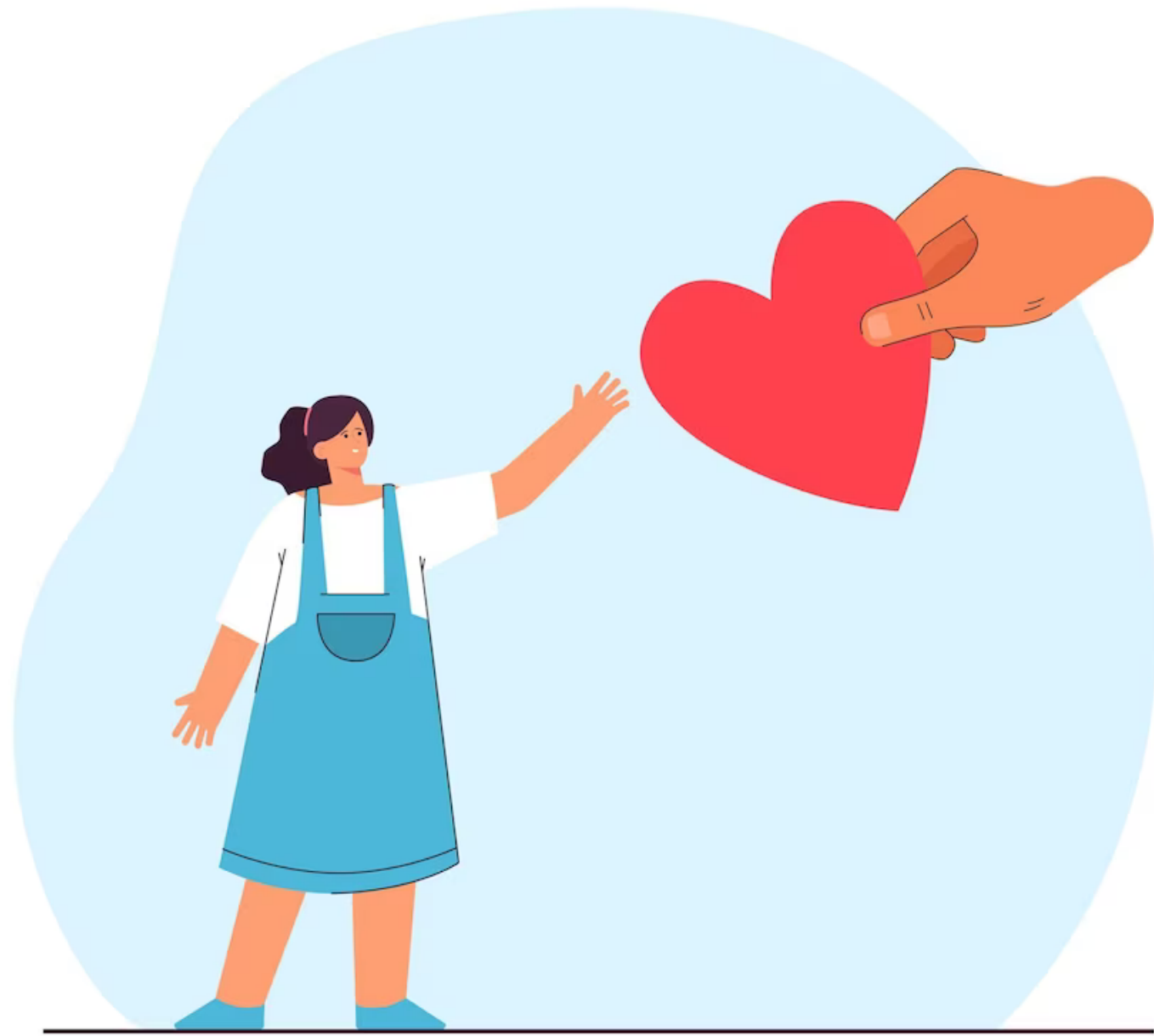
Post-Doctoral Research
Fellow:
Dr. Karys Peterson-Katz



**How are Canada's youngest
children doing?**

**When you are concerned
about a child's emotional
wellbeing, do you know the
right supports and services?**

What Is a System of Care Pathway?



- A predictable and equitable roadmap to help families and practitioners navigate emotional-wellbeing supports and services for children 0-6
- Inclusively built within your community to connect families to the right care at the right time

What Is a System of Care Pathway?

WHO is involved



WHAT actions are taken



WHERE these actions occur in a straightforward way

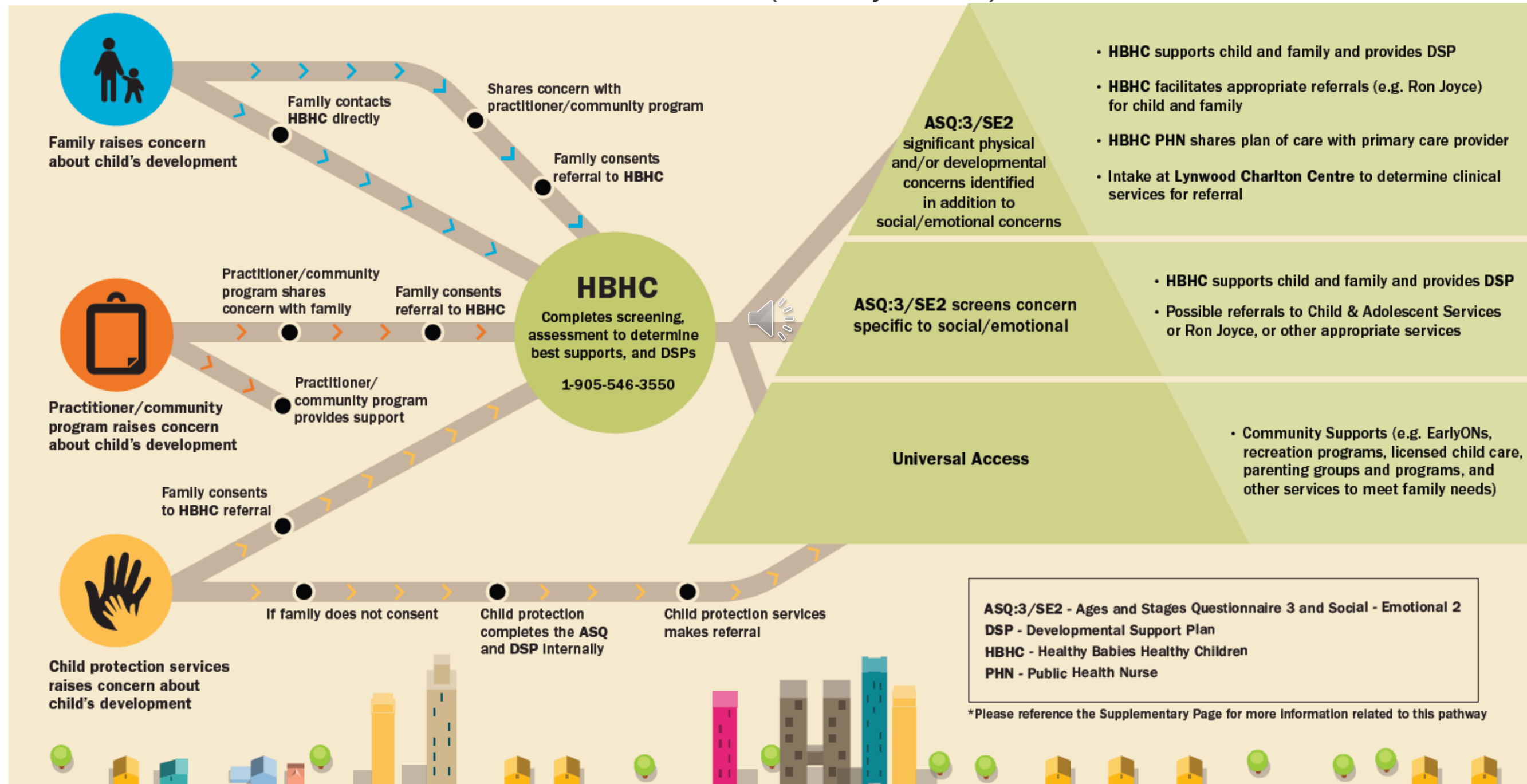


TIMELY and **APPROPRIATE** access to supports and services



What Does a Pathway Look Like?

CITY OF HAMILTON INFANT AND EARLY MENTAL HEALTH CARE PATHWAY Birth - Preschool (0 - 3.8 years old)



edited by SickKids: January 2022

What Is the IEMH Pathways Initiative?



- Build accessible and easy to navigate systems of care pathway through local partnerships
- Understand the impact of pathways on children, families, practitioners, organization, and communities

What Is the Timeline?

This initiative is expected to be completed within 2 years!

PHASE 1: Community Engagement (3-4 months)

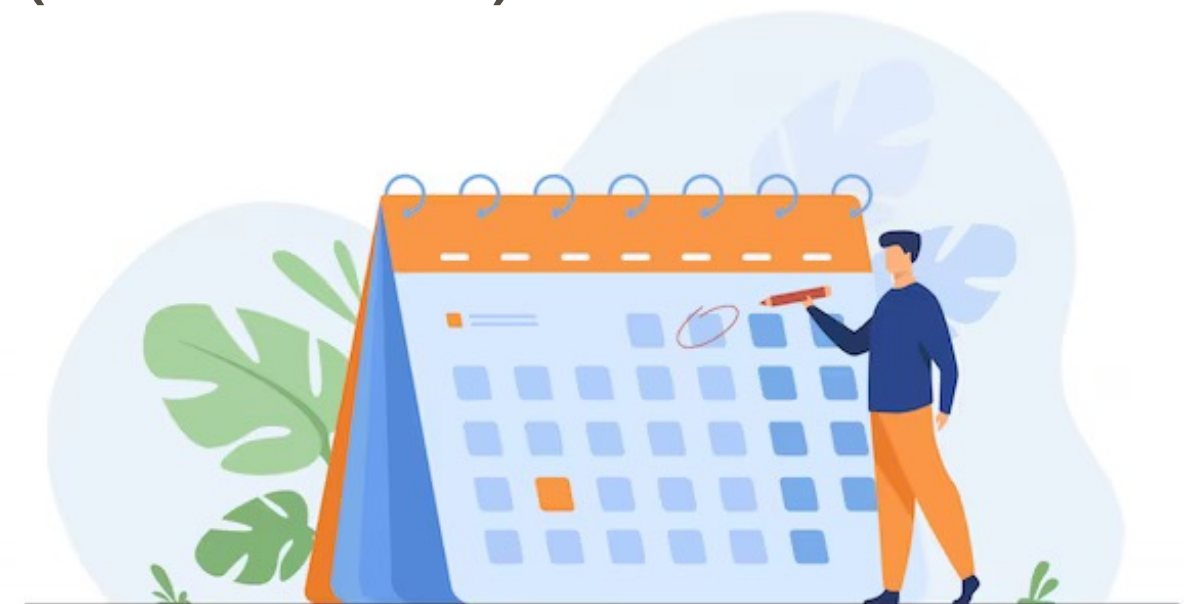
PHASE 2: Service Mapping (2-3 months)

PHASE 3*: Building the Aspirational Pathway (12 months)

PHASE 4*: ASQ/DSP Training and Evaluation (12 months)

PHASE 5: Pathway Implementation Evaluation (9 months)

*Phase 3 and 4 happen simultaneously!



What Happens in Each Phase?

PHASE 1: Establish Local Pathways Implementation Teams

- Implementation Team reviews and signs Memorandum of Understanding + Terms of Reference

PHASE 2: Staff from multiple organizations come together to map out services available for children 0-6 in your community

PHASE 3: Implementation Team develops aspirational systems of care pathway(s)



What Happens in Each Phase?

PHASE 4: Supervisors and frontline practitioners complete ASQ and DSP training

- Supervisors and frontline practitioners provide feedback through surveys and focus groups



PHASE 5: Implementation Team distributes pathway(s) amongst all participating organizations and staff members

- Supervisors and frontline practitioners use pathway(s) with families
- Supervisors and frontline practitioners provide feedback through surveys and focus groups



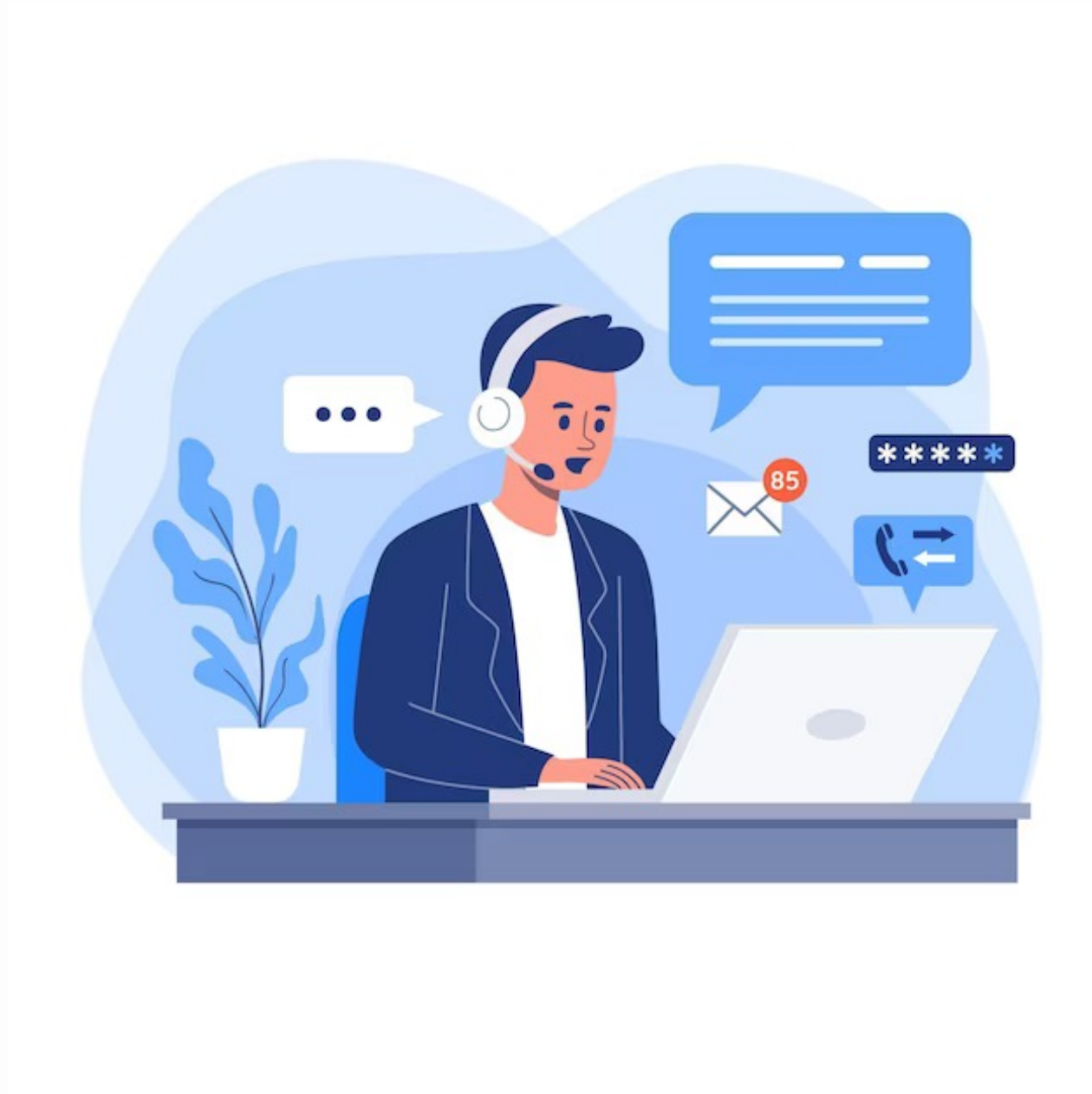
Keep the Goal in Mind!



Develop and implement IEMH care pathways and be able to provide equitable access to prevention, identification, and treatment of less-than-optimal IEMH to children birth to 6



Want to Learn More? Contact Us!



Emails

Project Coordinator:

rup.patel@sickkids.ca

Data and Evaluation:

karys.peterson-katz@sickkids.ca

Co-investigator:

chaya.kulkarni@sickkids.ca

Website

<https://imhpromotion.ca/IEMH-Pathways>

